

Access, diagnose and treat *earlier* than ever before.

## Extend Your Scope

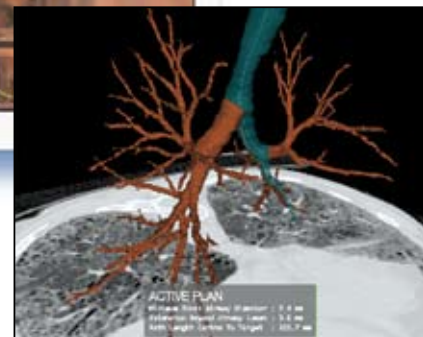
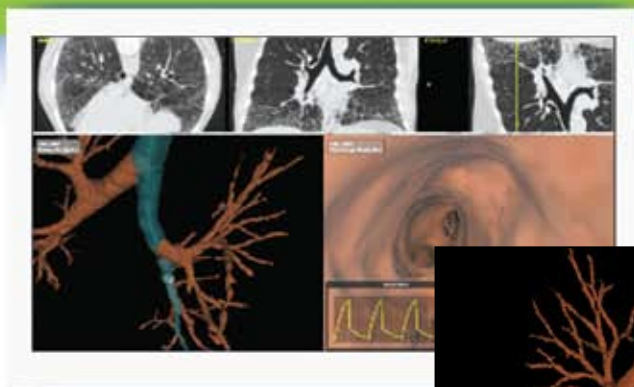
*SPiN*<sup>™</sup>

Lung Disease Management



**veran**  
medical technologies

Superior Analysis  
Superior Access  
Superior Accuracy



SPiN™ is part of Veran's superior suite of products that will enable clinicians to diagnose disease and deliver therapies in ways never before imagined. Combining CT airway information with electromagnetic tracking of bronchoscopic instruments, SPiN allows clinicians to target, with confidence, locations deep in the peripheral lung. Ultimately, SPiN may enable early diagnosis and treatment staging of suspicious peripheral solitary pulmonary nodules, helping to reduce patient anxiety and the costs associated with ordering repetitive, watchful waiting CT scans.

#### Veran wants to change how we interpret cancer.


SPiN is uniquely designed to integrate seamlessly into the bronchoscopic procedural workflow. Breakthrough technology creates a 3D model of the patient's bronchial tree and automatically maps the position of bronchoscopic tools onto that data without additional intra-procedural steps. Automated Veran plug-n-play technology may help to reduce the length of complicated peripheral access procedures. SPiN monitors and compensates for patient respiration and movement to ensure the most accurate positional information during lung procedure.

SPiN integrates a broad palette of instruments to accommodate clinician preference. For all instrumentation, SPiN tracking technology is seamlessly incorporated into the most critical part of the instrument, allowing for continuous tracking and ensuring that the instrument is always on target.

#### Cancer patients become true survivors.



**veran**  
medical technologies

IN PARTNERSHIP WITH VIDA DIAGNOSTICS  


CALL OR  
CLICK 314-659-8500

[www.veranmedical.com](http://www.veranmedical.com)